



THE PERFECT PARTNER
FOR PERFECT DOCUMENTS

**Interlink MortgageWare®
Miracle Integration Guide**

07/19/07

MortgageWare interfaces data to Miracle Online using an application provided by MRG called MWMRG. MWMRG is available for download from the Miracle Online website, <http://www.mrgdocs.com/Mortgageware.shtm>

Installation and Configuration of the MortgageWare to MRG Export Interface

Download MRMRG from the Miracle Online website and save it to your computer's hard drive. The filename for the MortgageWare to MRG Export Interface is "mwmrgr.exe".



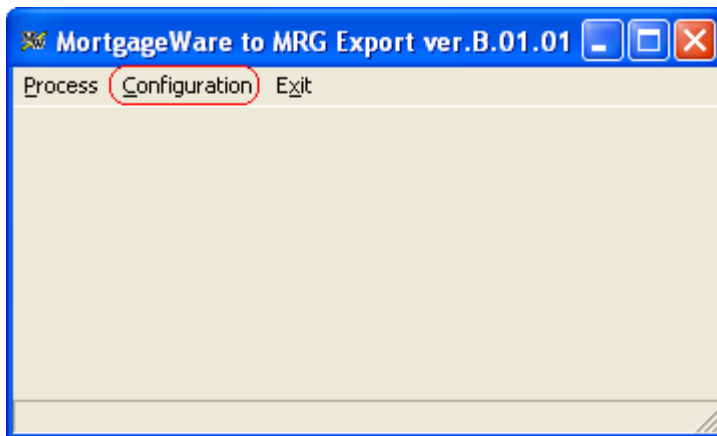
It is not necessary to run an installation program. Make sure to save MWMRG.exe in a location you can easily find it later. You may want to save it on the Desktop. Alternatively, an administrator may save MWMRG on the network and create shortcuts on the workstations.

It is imperative that the FairCom ODBC drivers available from Interling also be installed on each computer that will interface loans into MRG's Miracle DocPrep system. FairCom allows MRG and other vendors like MRG to access the MortgageWare database. It is a **MUST** to install the FairCom driver on each computer. **An administrative sign on may be required to install.**

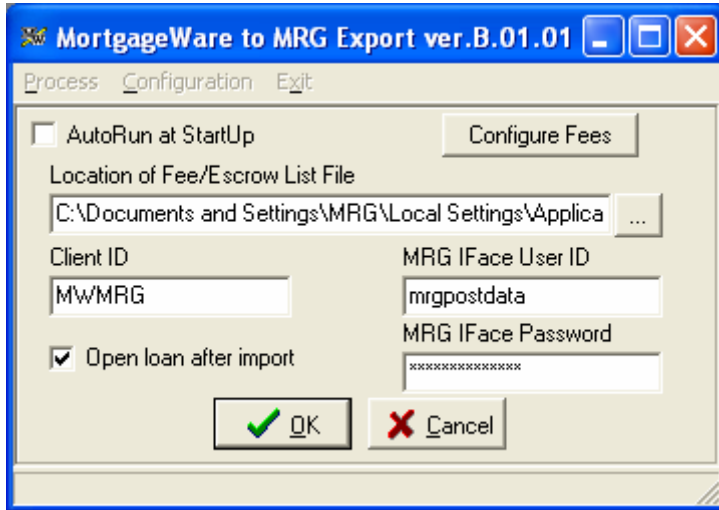
MWMRG must be configured on every workstation from which it will be run. Double



click on the MWMRG.exe program and select "Configuration".



Under Configuration, enter the Client ID, MRG IFace User ID, and MRG IFace Password. This information will be provided by the Miracle Installation department.



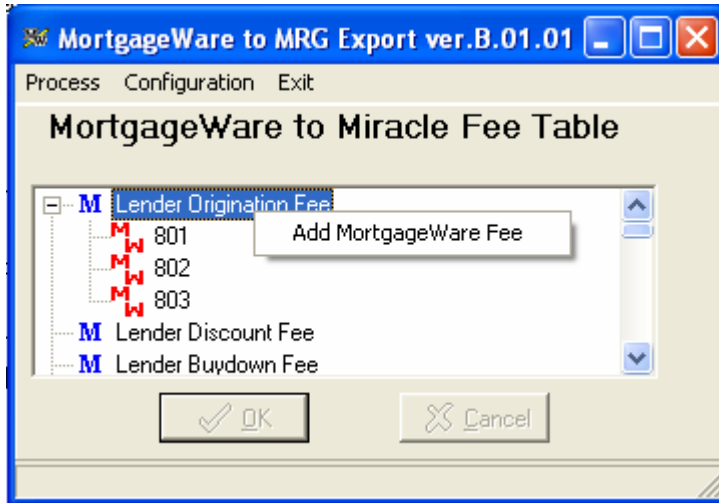
“Location of Fee/Escrow List File” is of special note as this allows the application to be configured to look at a shared Fee and Impounds settings file. The value of this text box defaults to the user’s TEMP folder. If this is left with the default value, the Fees and Impounds will need to be configured separately on each workstation. If the Administrator configures this to point to a network location the Fees and Impounds can be configured once for all workstations.

The user will have to enter their list of fee descriptions. This is accomplished by clicking on the appropriate tab and mapping each fee one by one. The descriptions must match the HUD line number used in MortgageWare.



Adding Fees to Fee Table

1. To activate a new MortgageWare field (“MW”), right-click on the Miracle fee (“M”) to receive the dialog box “Add MortgageWare fee”. Click on box .

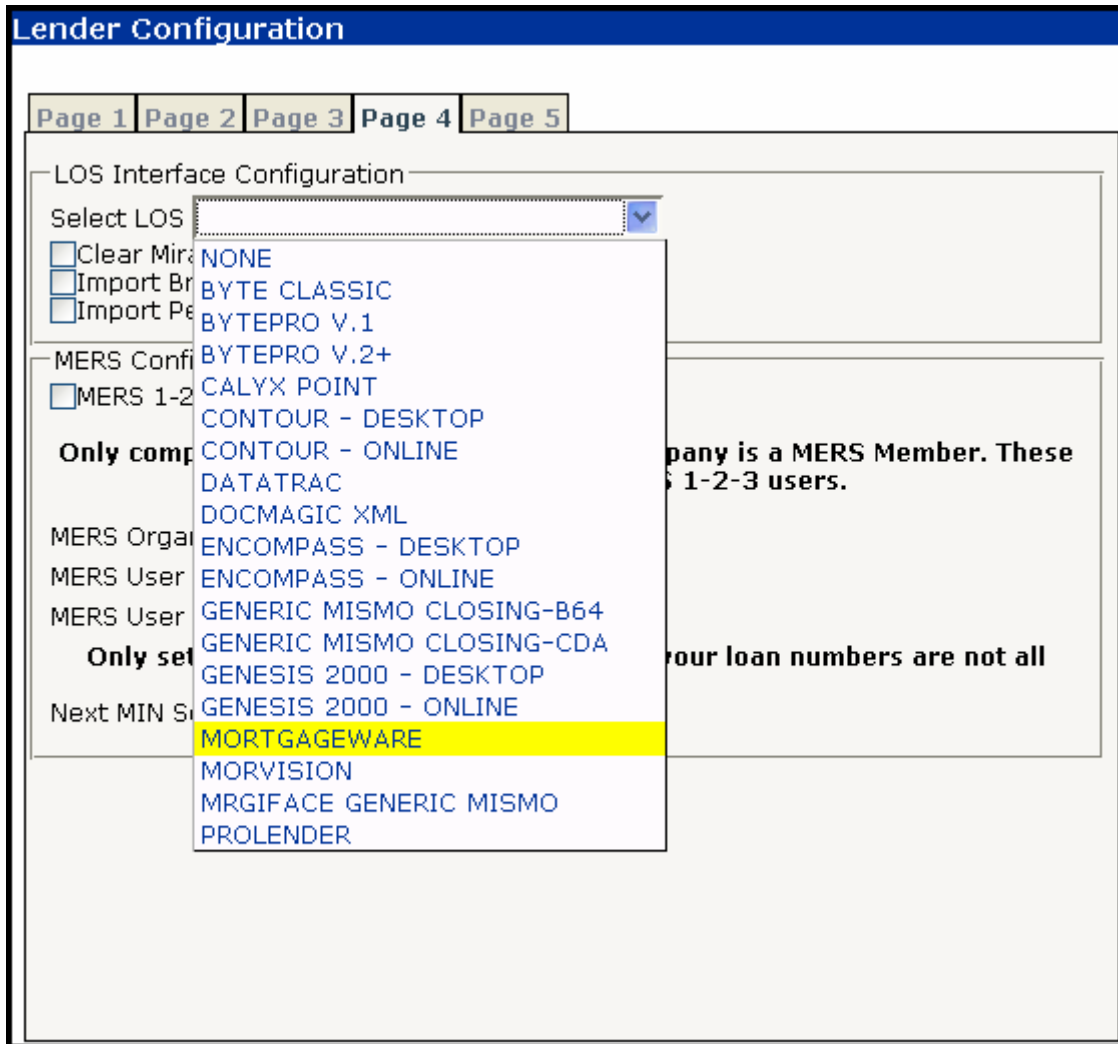


The new MortgageWare Field  will appear.

2. Click into the new space, delete the “<MortgageWare HUD #>” verbiage and begin to type the HUD number exactly as it is shown in MortgageWare.
3. Repeat steps 1 and 2 until all fees are entered.

Click “OK” to complete configuration of MortgageWare to MRG Export Interface.

Before interfacing a loan from Contour into Miracle Online, ensure your Miracle System Administrator has set 'Contour – Online' to be the LOS in the 'Lender Configuration - Page 4'.



Exporting Loans to MRG



Double click on the `MWMRG.exe` program and select “Process”.

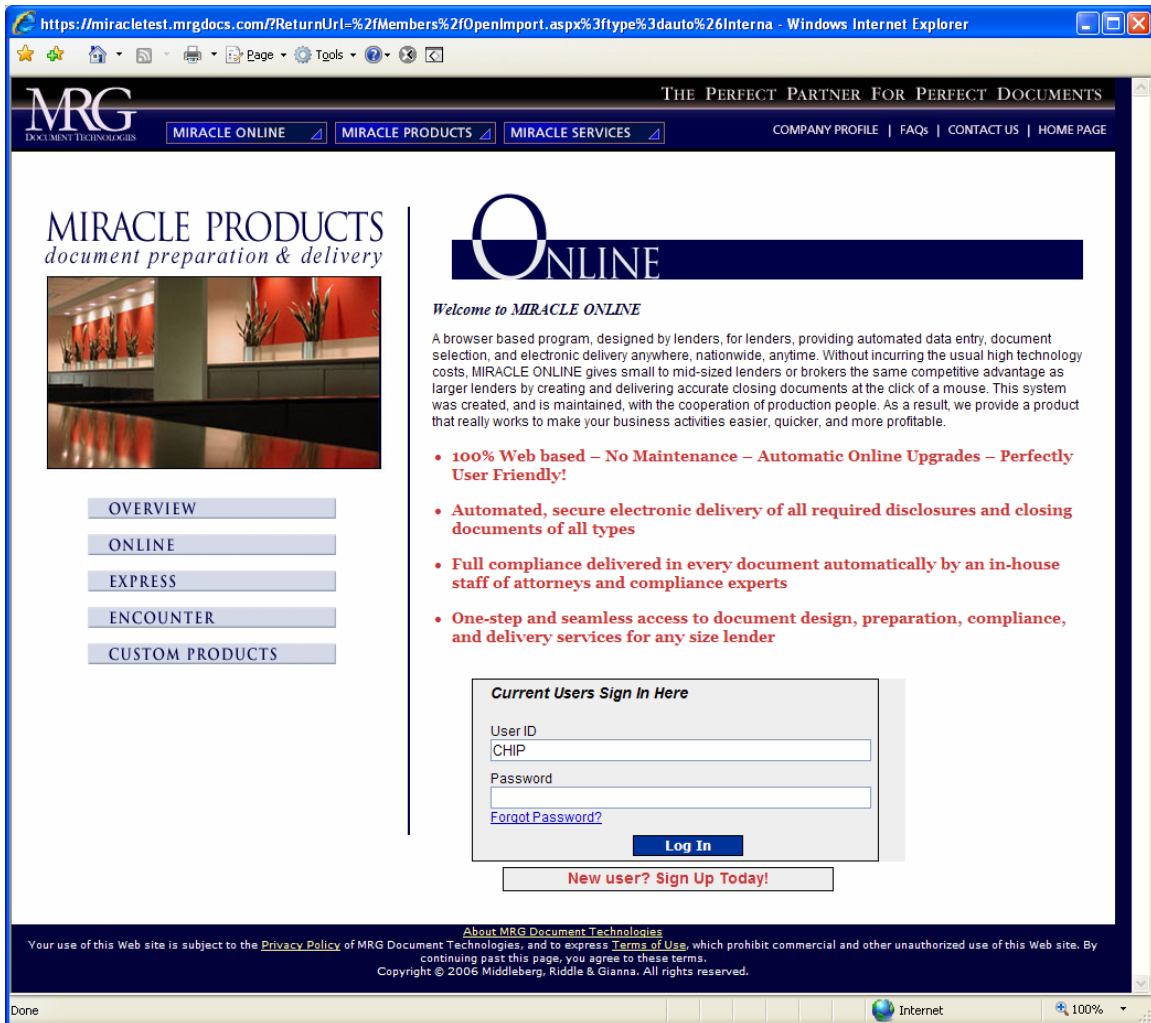


Enter in Loan Number to export and click “Export”.



If you are not currently logged into Miracle Online, you will be presented with the following:





You will then be asked how you would like to open the loan.

Select either Upfront/Initial Disclosure Package or Final Closing Package.

Press either Open Using Standard Screens or Open Using Rapid Data

... Standard Screens - opens the loan to the Basic Loan Information (Part 1).

... Rapid Data - opens the loan with a new feature that only displays the remaining required fields to order a loan package.



Pressing Open Using Standard Screens opens Miracle Online into the loan you just interfaced to Basic Loan Information (Part 1).

https://miracletest.mrgdocs.com/ - Basic Loan Information (Part 1) - Loan #ENC-TXHE - Windows Internet Explorer

MRG DOCUMENT TECHNOLOGIES THE PERFECT PARTNER FOR

MIRACLE ONLINE | MIRACLE PRODUCTS | MIRACLE SERVICES | COMPANY PROFILE | FA

Basic Loan Information (Part 1)

Loan #ENC-TXHE

Loan Type: CONV | Document Format: | Program Type: FIXED | Program Code: | Loan Purpose: TX HOME EQUITY | Branch Code: |

Application Date: 05/21/2005 | Loan Amount: 60000.00 | Note Rate: 10.800 | Loan Term: 180 | MI Rate 1: | MI Rate 2: |

Document Date: 06/09/2005 | Funding Date: | First Pay Date: 08/01/2005 | Balloon Term: 0 | Buydown Rate 1: | Buydown Rate 2: | Buydown Rate 3: |

Base Loan Amt: 60000.00 | LTV: 71

Property Address: 6118 ELM VALLEY DRIVE | City: SAN ANTONIO | State: TEXAS | Zip Code: | County: BEXAR

FNMA Rehab | Mobile Home | Home Improve | Leasehold

Pressing Open Using Rapid Data opens Miracle Online into the loan you just interfaced to the Loan Completion Wizard screen.

MRG DOCUMENT TECHNOLOGIES THE PERFECT PARTNER FOR PE

MIRACLE ONLINE | MIRACLE PRODUCTS | MIRACLE SERVICES | COMPANY PROFILE | FAQs |

Loan Completion Wizard

Loan #LH-BALLOON

What is...

This screen contains only the "required fields" for ordering documents which may expedite data entry.
NOTE: Other optional fields, such as fees, may be necessary for some loan documents.

Loan Program Selection

Loan Type: CONV | Document Format: | Program Type: FIXED | Program Code: | Branch Code: SSTSTNEWSYSTEM | Document Date: 11/16/2005 | Funding Date: | Rel Code: <BLANK> | Type of Entity: | Broker County: | Broker Phone: | Broker State of Incorp.: <PLEASE SELECT...>